

Initial Setup Guide

AV Receiver

DRX-5.4



<https://integraworldwide.com/manual/drx54/top.pdf>

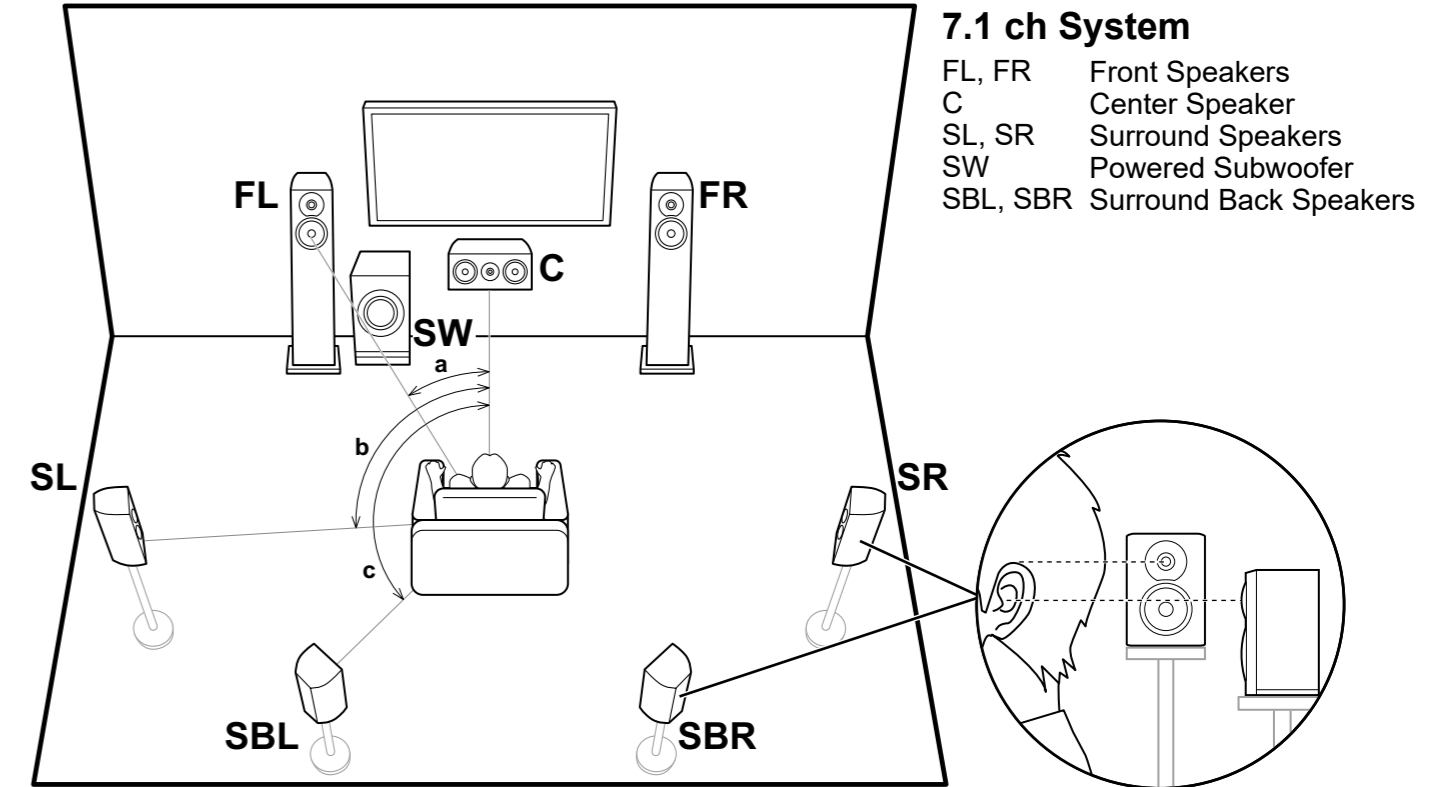
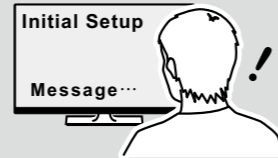
This document uses a 7.1 channel system as an example when describing use. Refer to the online instruction manual when using other than a 7.1 channel system. There are also descriptions for using the multi-zone feature and other detailed operating instructions.

STEP 1

Info

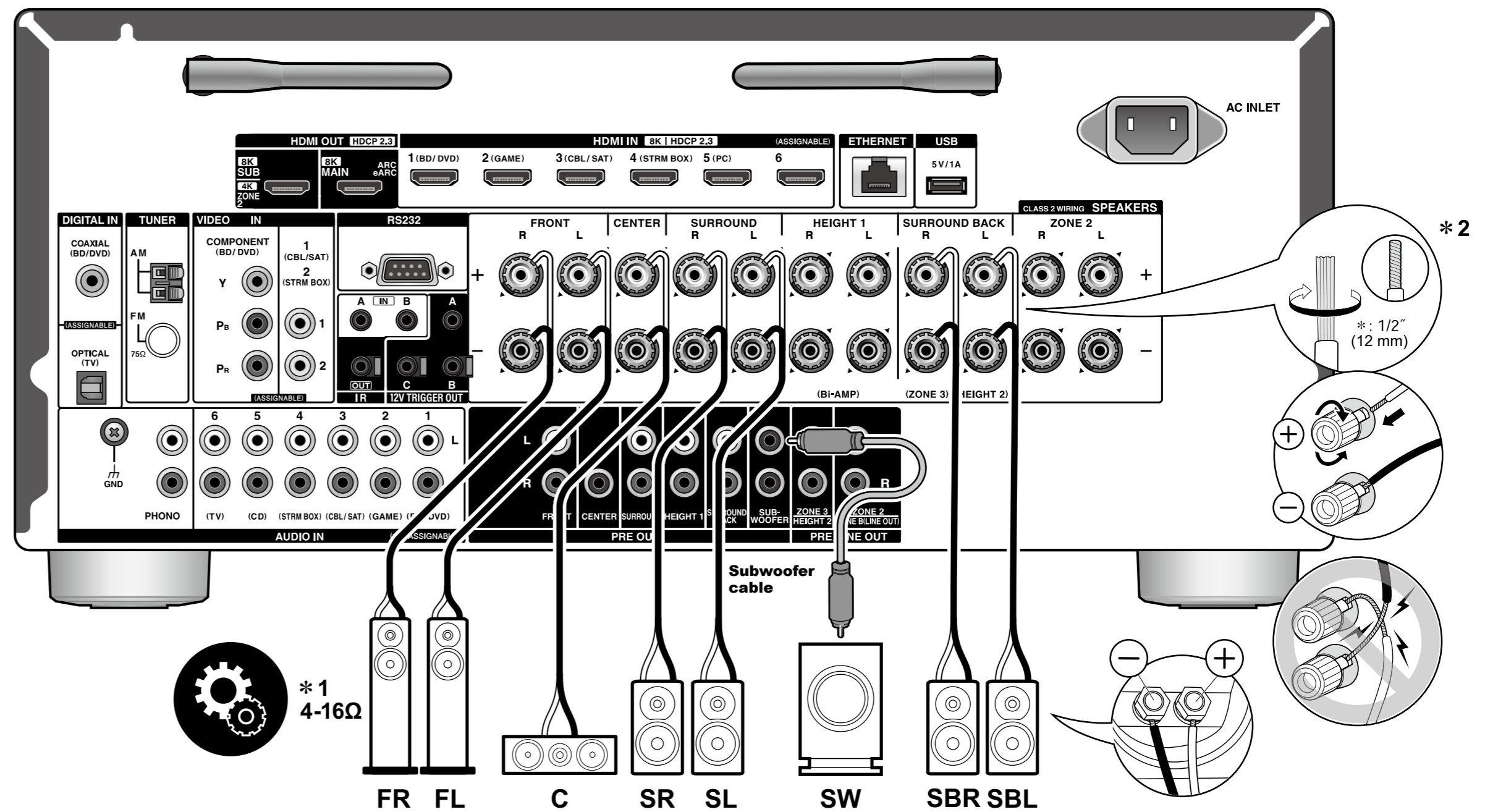


This icon means the important setting. Make sure to confirm the setting at "Initial Setup" (STEP 3).



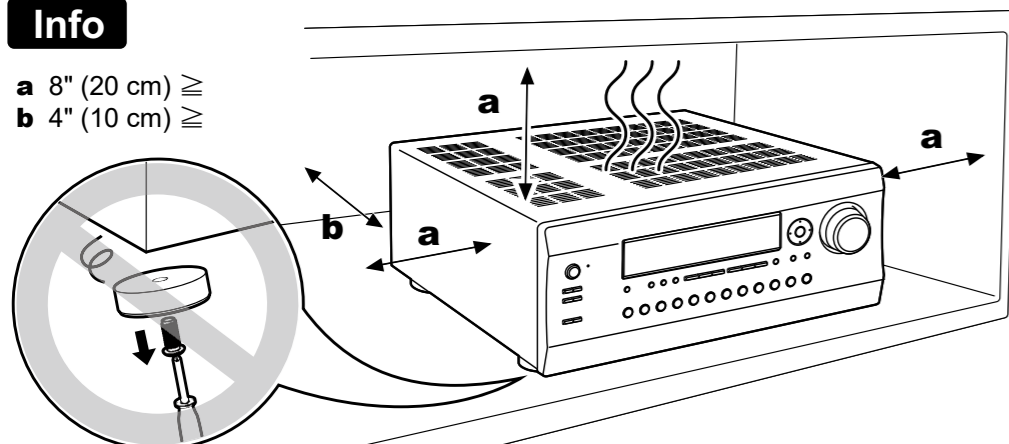
7.1 ch System
 FL, FR Front Speakers
 C Center Speaker
 SL, SR Surround Speakers
 SW Powered Subwoofer
 SBL, SBR Surround Back Speakers

a: 22° to 30°, b: 90° to 110°, c: 135° to 150°

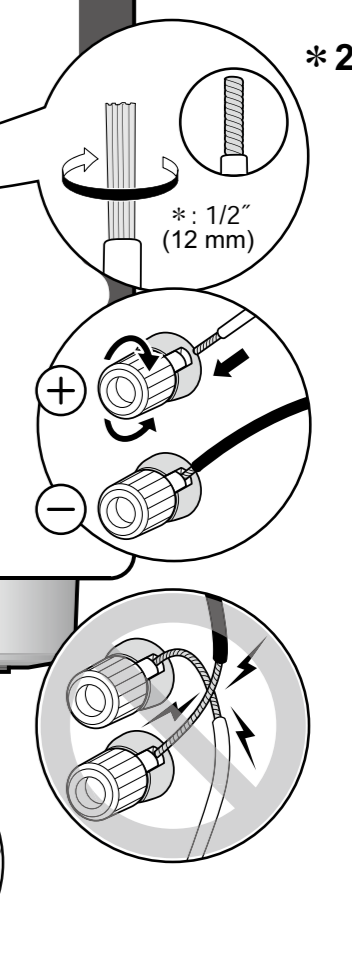


Info

a 8" (20 cm)
 b 4" (10 cm)

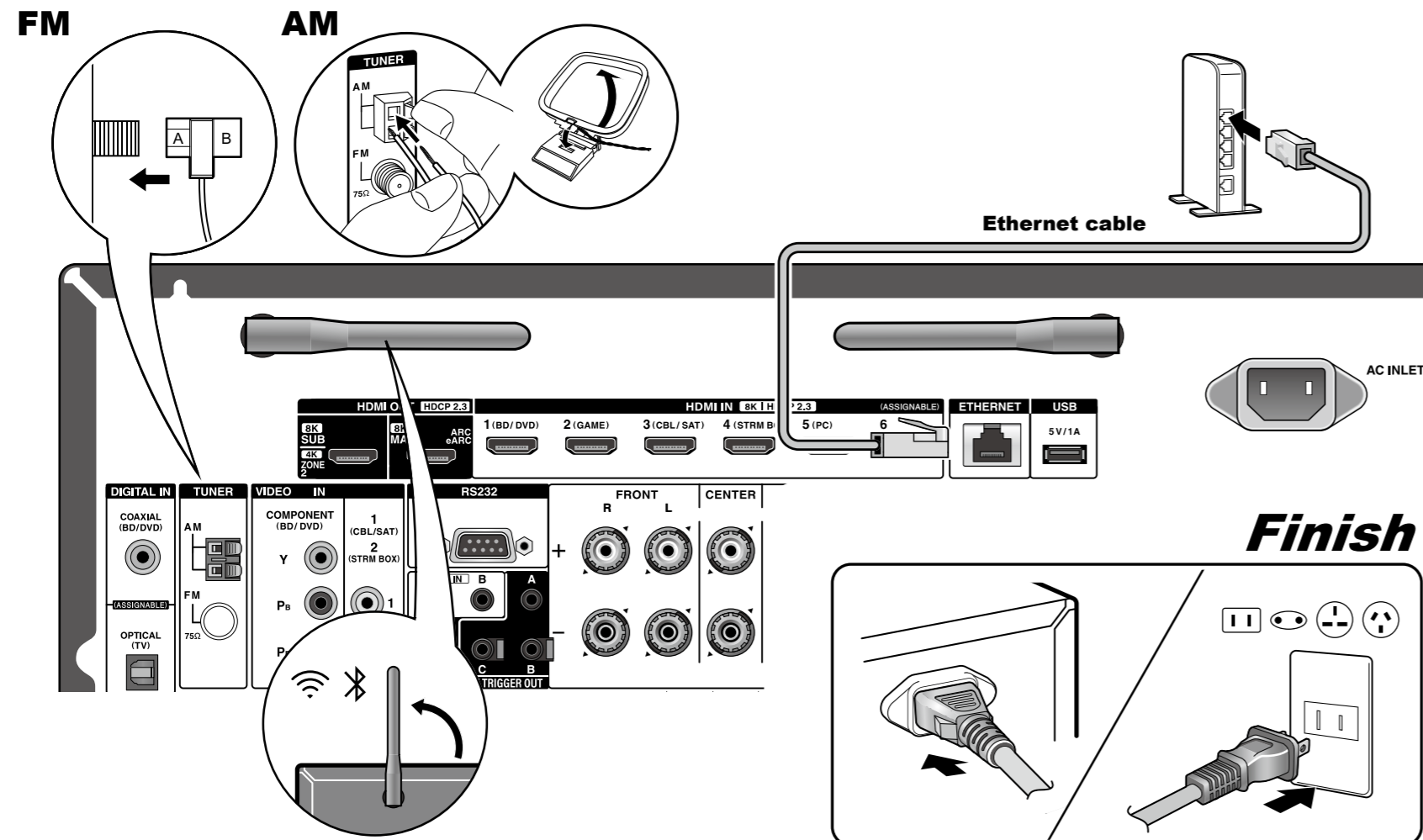
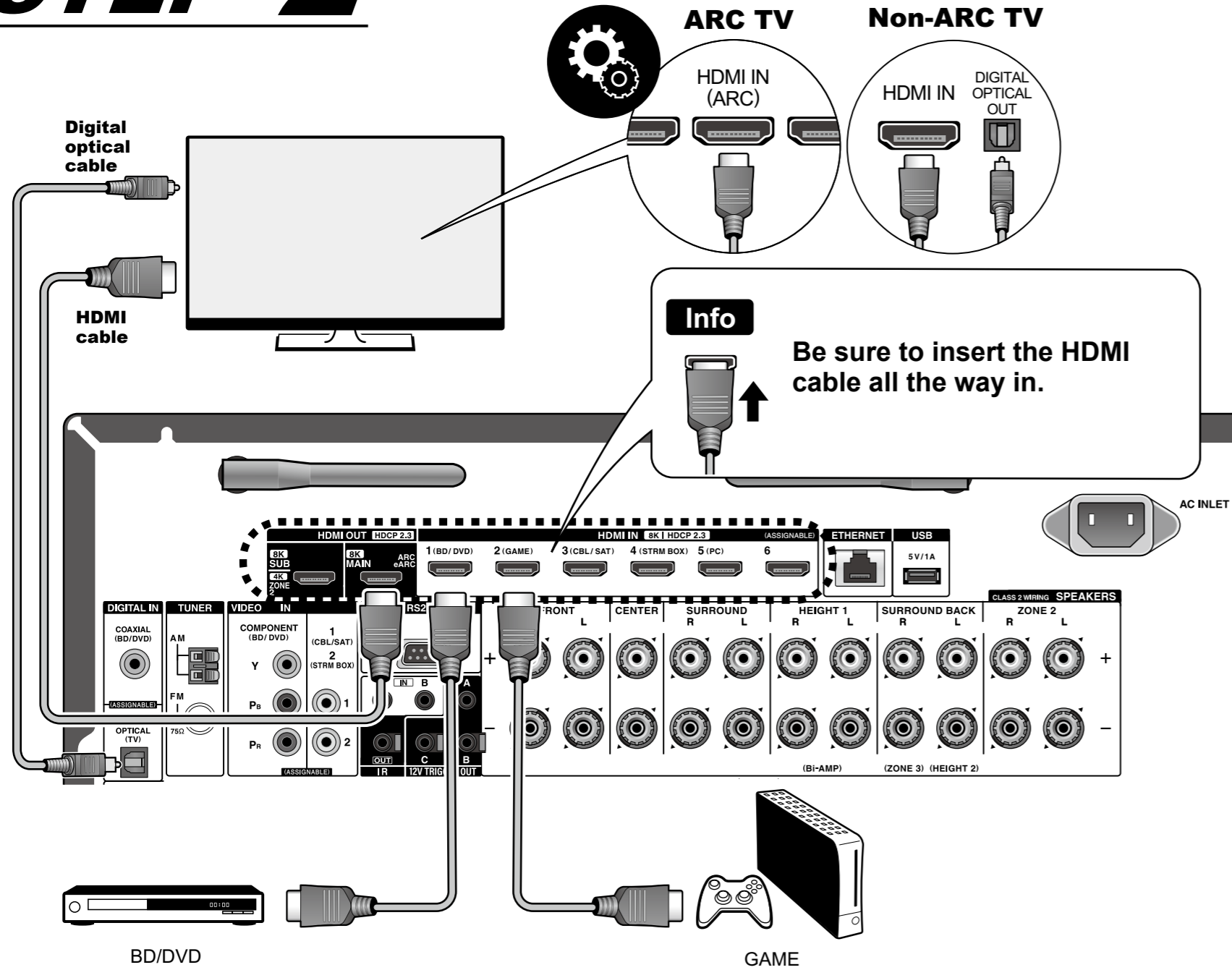


*1
 4-16Ω

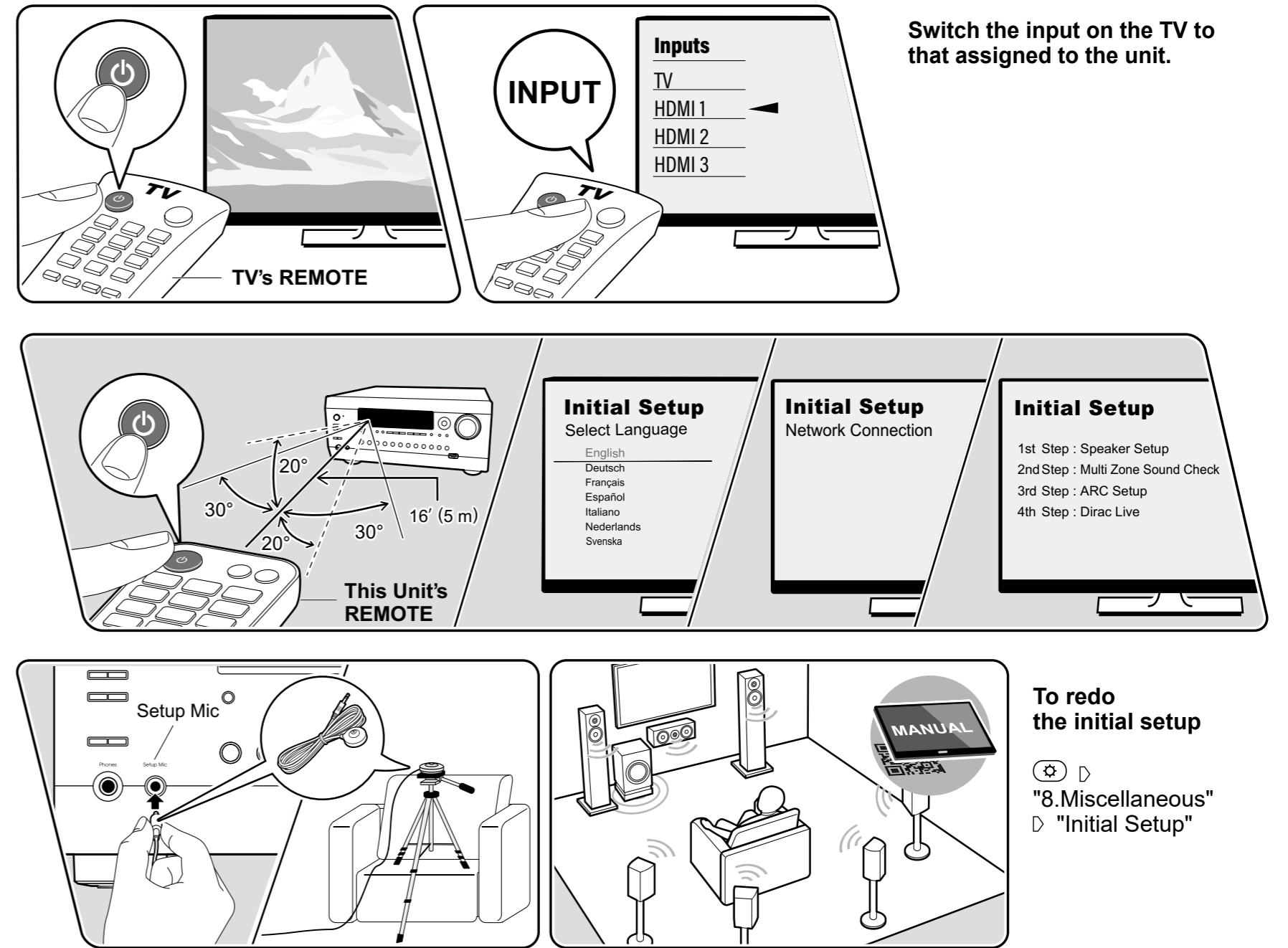


*1 & 2
 Connect speakers with 4 Ω to 16 Ω impedance. Twist the ends of the speaker cable wires tightly.

STEP 2



STEP 3



Info

Troubleshooting

Try restarting the unit. Switch this unit to standby, then do ❶. If the problem is not fixed, try the following:

- Unplugging the power cord and HDMI cables then replugging them in again
- Initializing the settings (do ❷ while this unit is ON)
- Updating the firmware

❶ Restart

❷ Initialize